

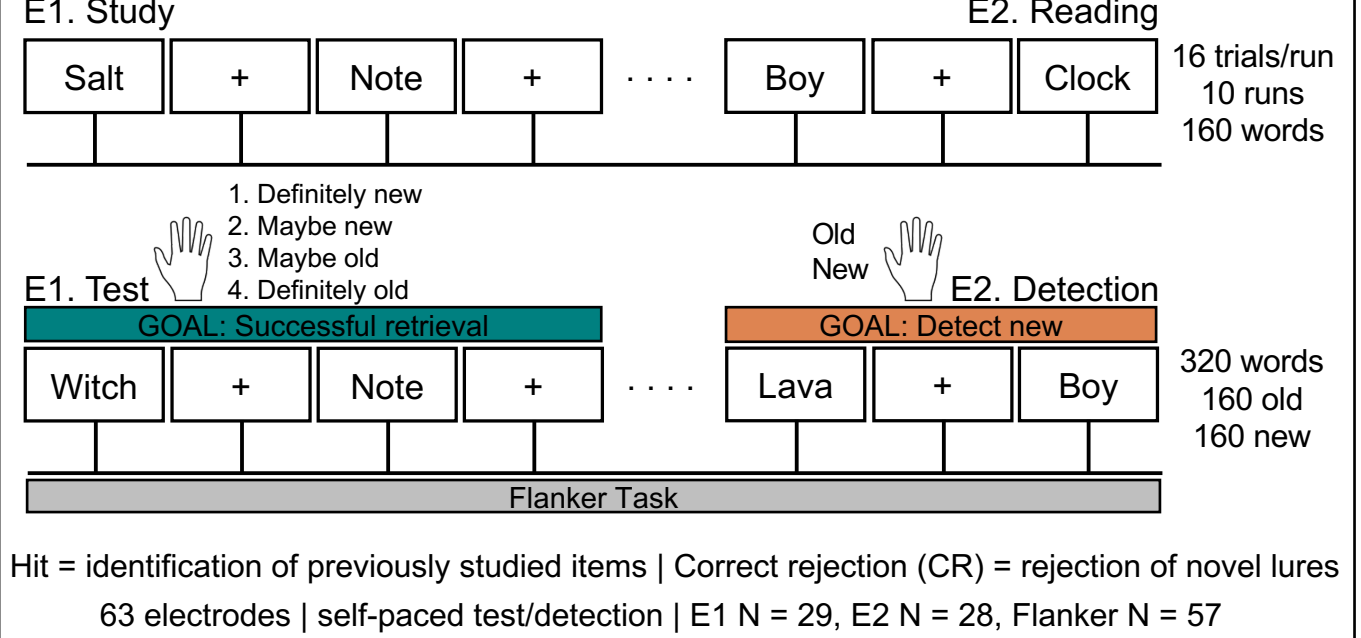
Introduction

- How do memory goals influence retrieval signals?
- Successful retrieval may be intrinsically rewarding and automatically induce a retrieval state Speer et al. 2014, Smith et al. 2022
- However, reward signals and brain state changes preceding and following memory decisions may instead be driven by top-down task demands, rather than successful retrieval Han et al. 2010
- Theta power (4-8Hz) dissociates both successful retrieval and tracks feedback/outcomes across cognitive control tasks Smith et al. in prep; Cavanagh & Frank, 2014

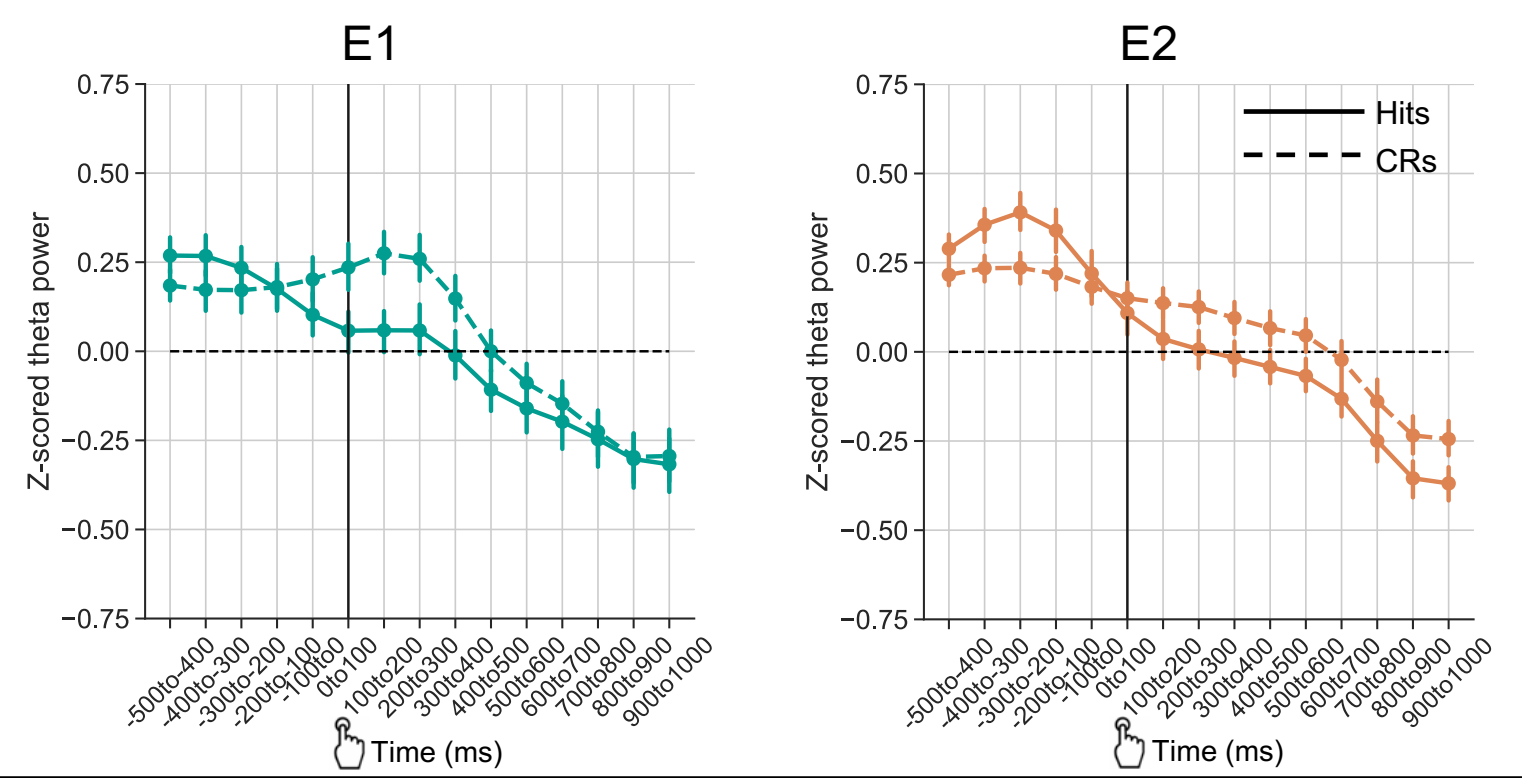
Question

- To what extent do memory goals modulate test-phase signals?

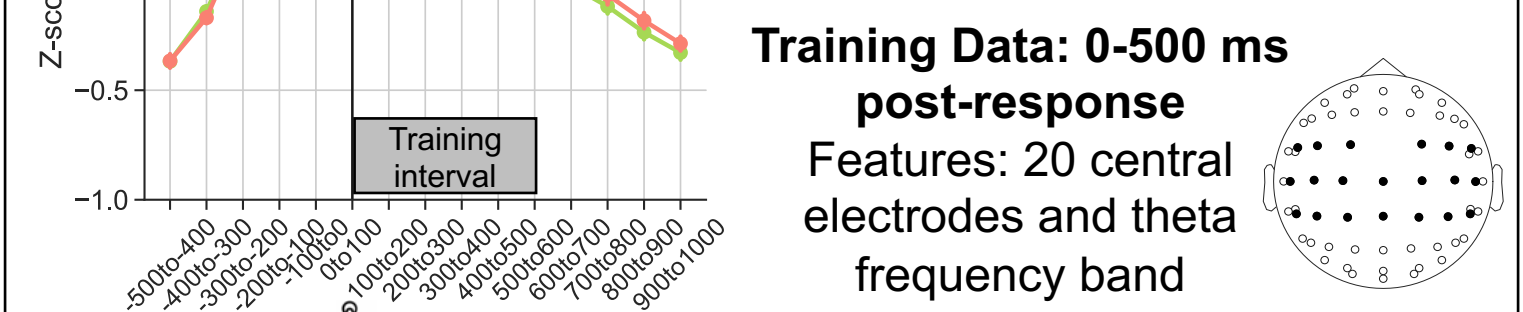
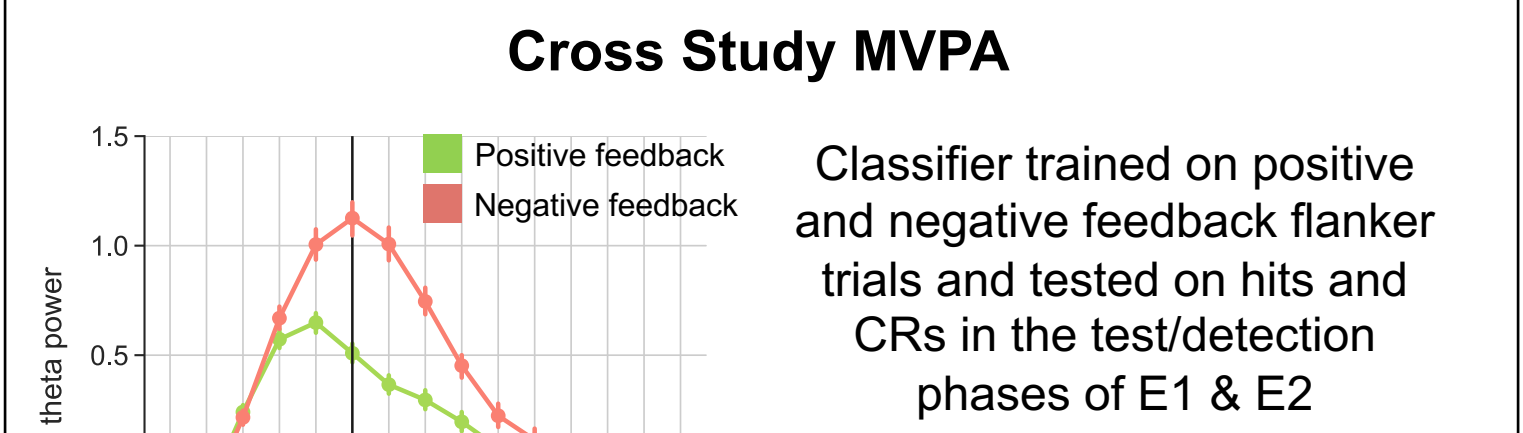
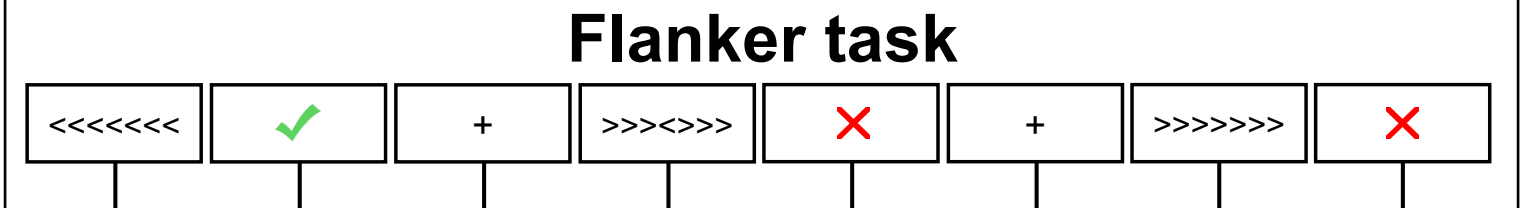
Recognition task



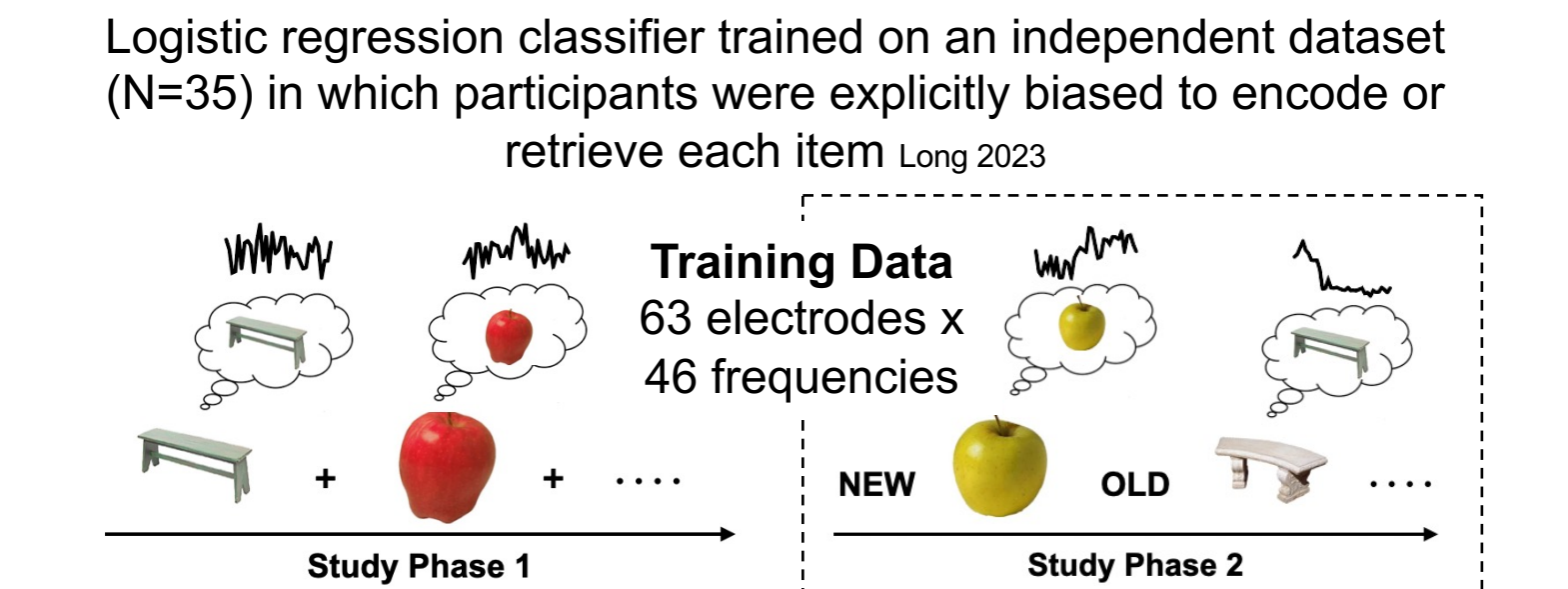
Post-response central theta power decreases for Hits vs CRs regardless of goals



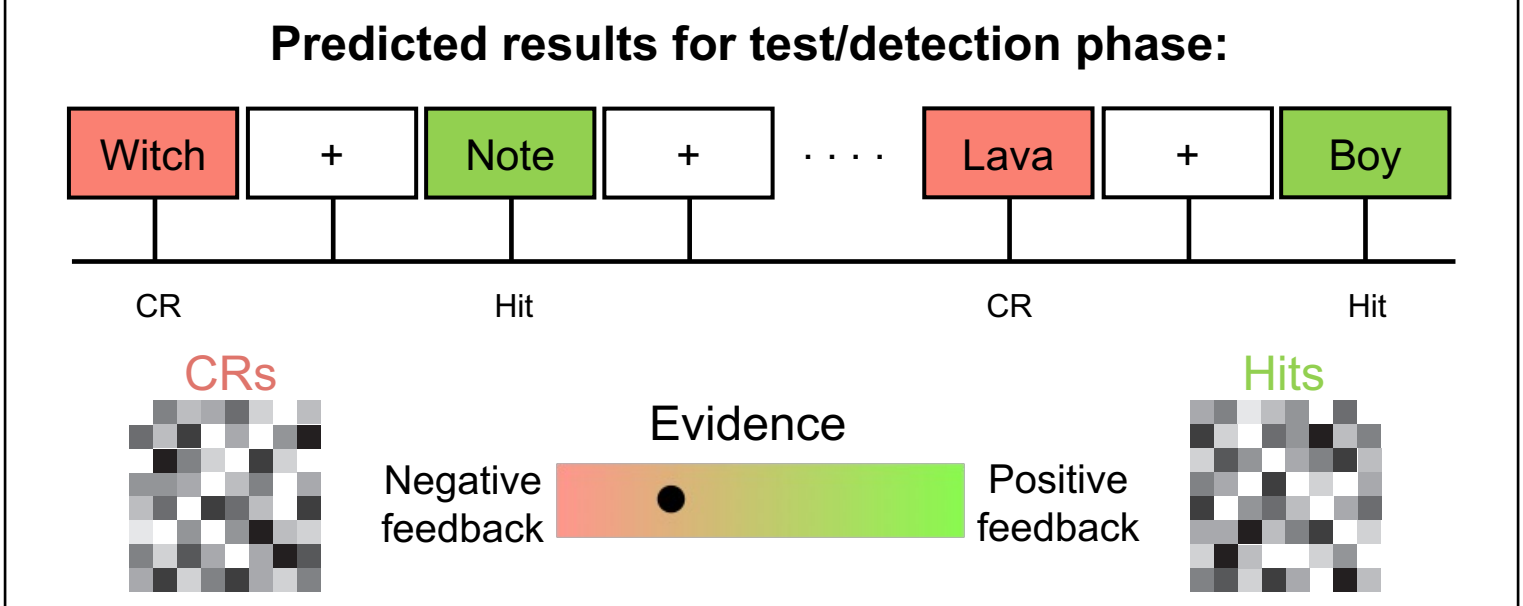
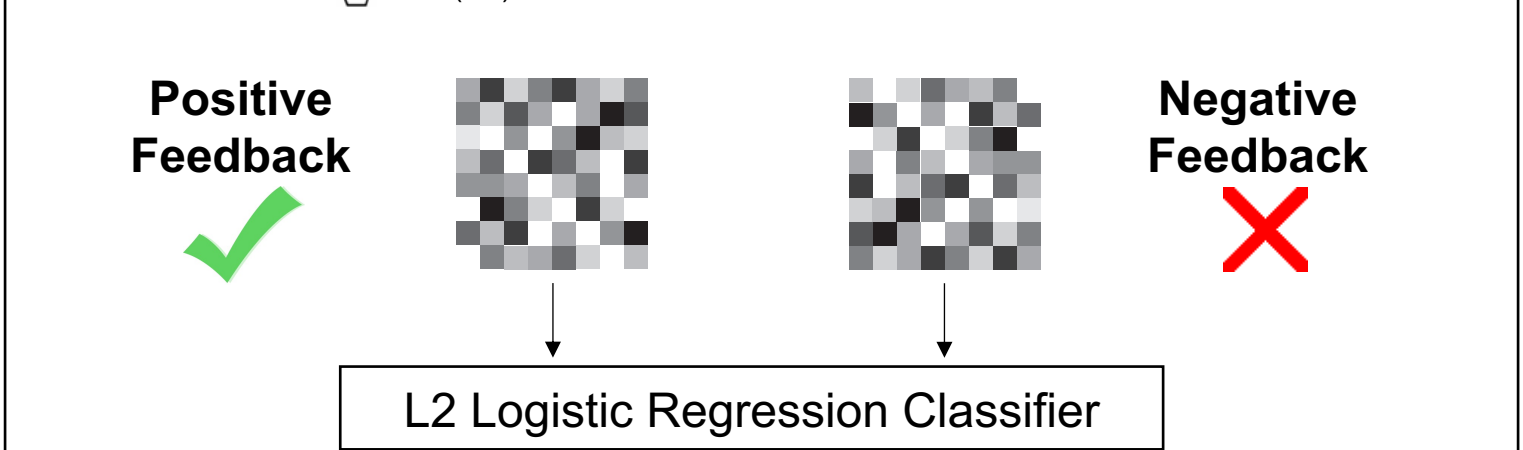
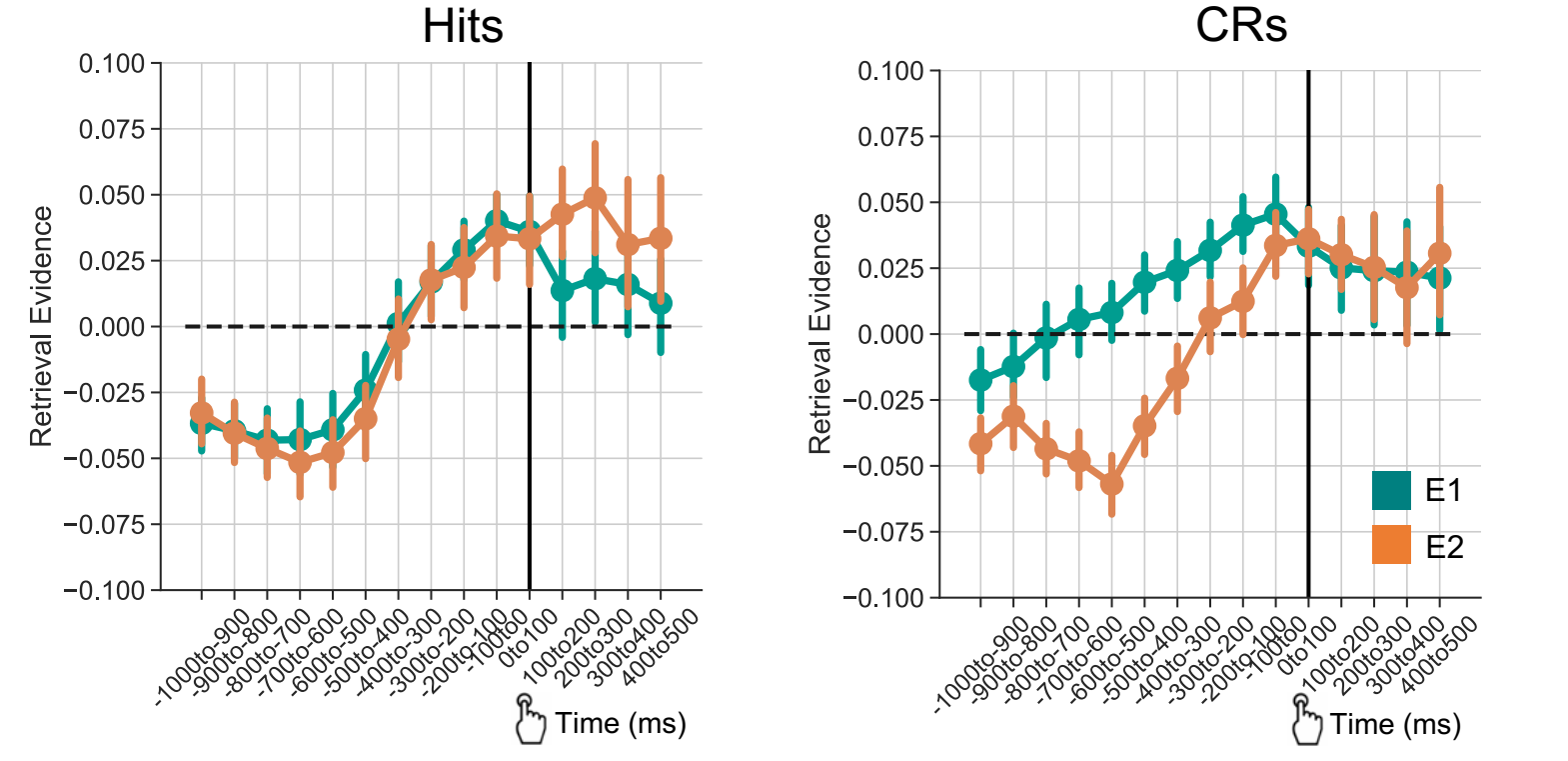
Future directions: direct estimate of feedback



Cross study multivariate pattern analysis (MVPA)



Reduced pre-response retrieval state evidence for CRs during novelty detection



References

Cavanagh, J.F. & Frank, M.J. (2014). Frontal theta as a mechanism of cognitive control. *Trends in cognitive sciences*, 18(8), 414-421.

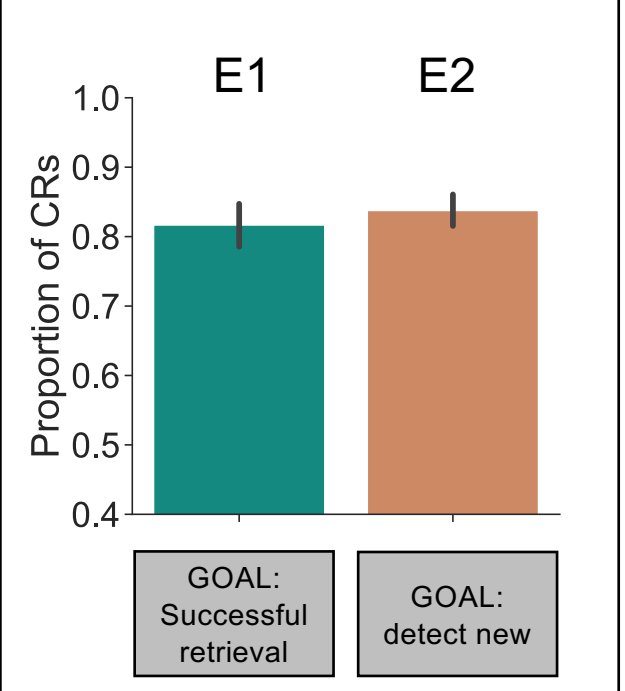
Han, S., Huettel, S.A., Raposo, A., Adcock, R.A. & Dobbins, I.G. (2010). Functional significance of striatal responses during episodic decisions: recovery or goal attainment? *The Journal of Neuroscience*, 30(13), 4767-4775.

Long, N.M. (2023). The intersection of the retrieval state and internal attention. *Nature Communications*, 14(3861).

Smith, D.E., Moore, I. L., & Long, N.M. (2022). Temporal context modulates encoding and retrieval of overlapping events. *The Journal of Neuroscience*, 42(14), 3000-3010.

Speer, M.E., Bhanji, J.P. and Delgado, M.R. (2014). Savoring the past: positive memories evoke value representations in the striatum. *Neuron*, 84(4), 847-856.

No difference in CR rates for E1 and E2



This research was supported by NIH/NINDS R01NS132872 to NML

ds9wk@virginia.edu | longtermmemorylab.com

Summary

- No difference in CR rates between E1 and E2
- Decreased theta power following hits vs CRs in both E1 and E2
- Prior to the response, there is less retrieval evidence for CRs during novelty detection